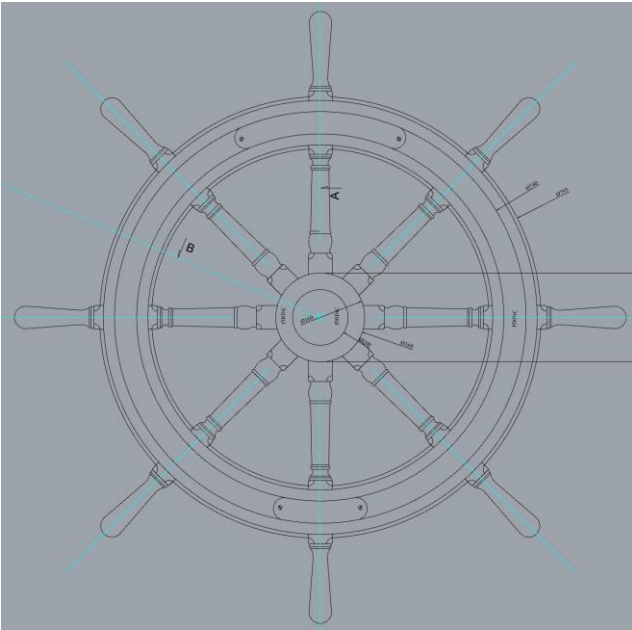


Classic Yacht Cockpit, Deck and Rig Equipment:

COCKPIT EQUIPMENT:

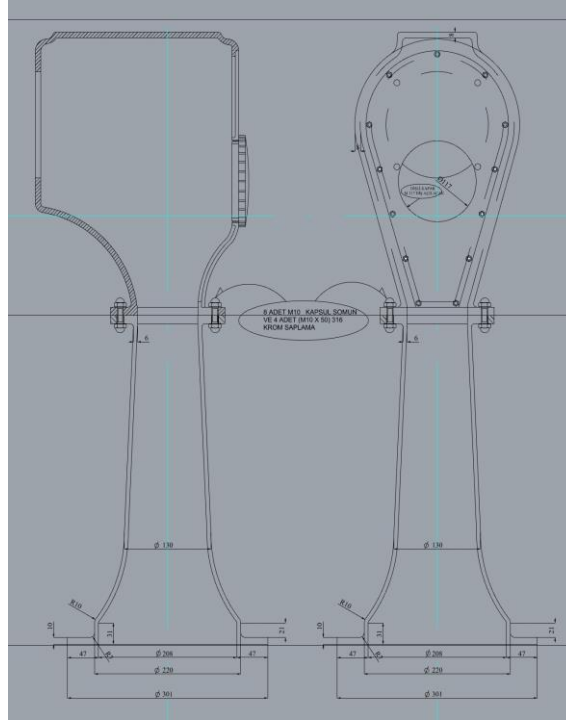
Steering wheel:



Gas throttle: Antique Bridge - Engine Room Telegraph mechanism pedestal and indicating gauge, modified to operate a modern throttle system while keeping the old heritage alive, together with mechanical ringing sound alert at STOP-CLUTCH IN @ 30 DEGREES – SLOW SPEED - HALF SPEED – FULL SPEED. (MAX 80 DEGREES TO BOTH FORE AND AFT DIRECTION AS REQUIREMENTS OF MODERN THROTLLE LEVER).

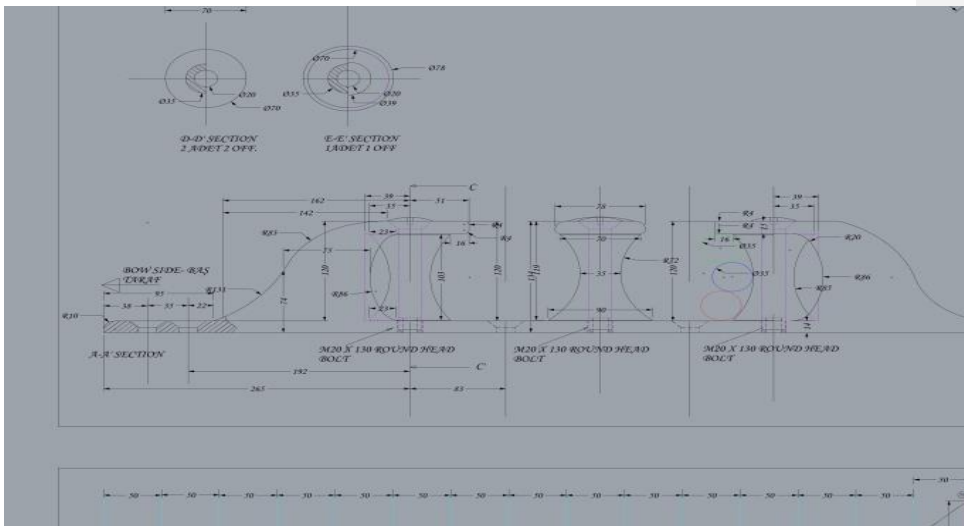


Steering Wheel Pedestal: Pedestal casing is cast and machined to accommodate the steering system hydraulic pump, directly coupled to the steering wheel. Steering pump is accessible from back side of the pedestal casing to reach the hydraulic hose connections and pump for inspection and maintenance.



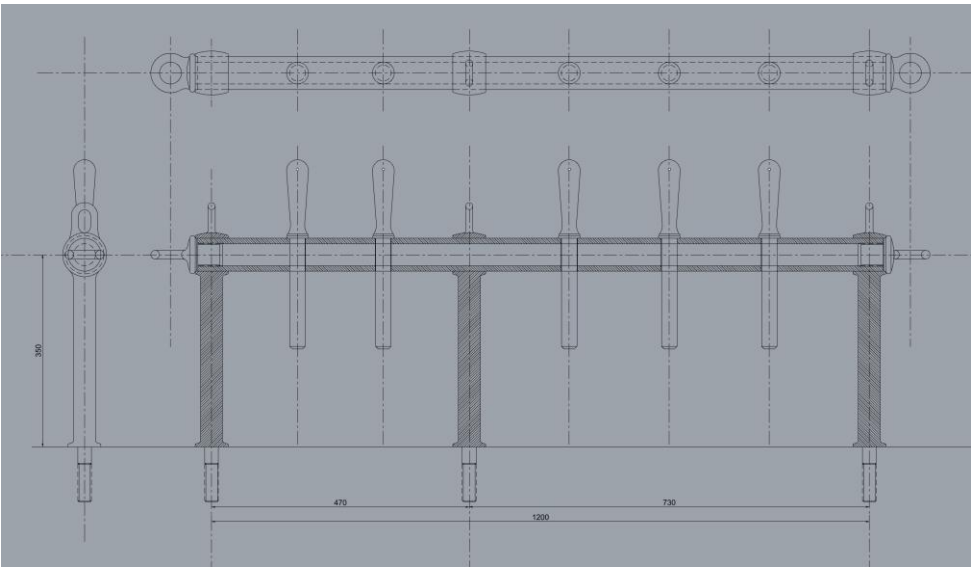
Deck Equipment:

Aft Roller Fairleads:

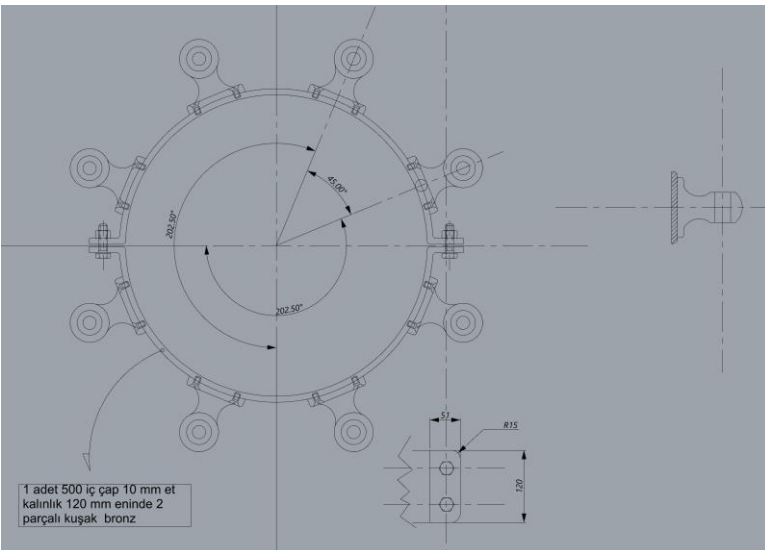


Biçimlendirilmiş: İngilizce (ABD)

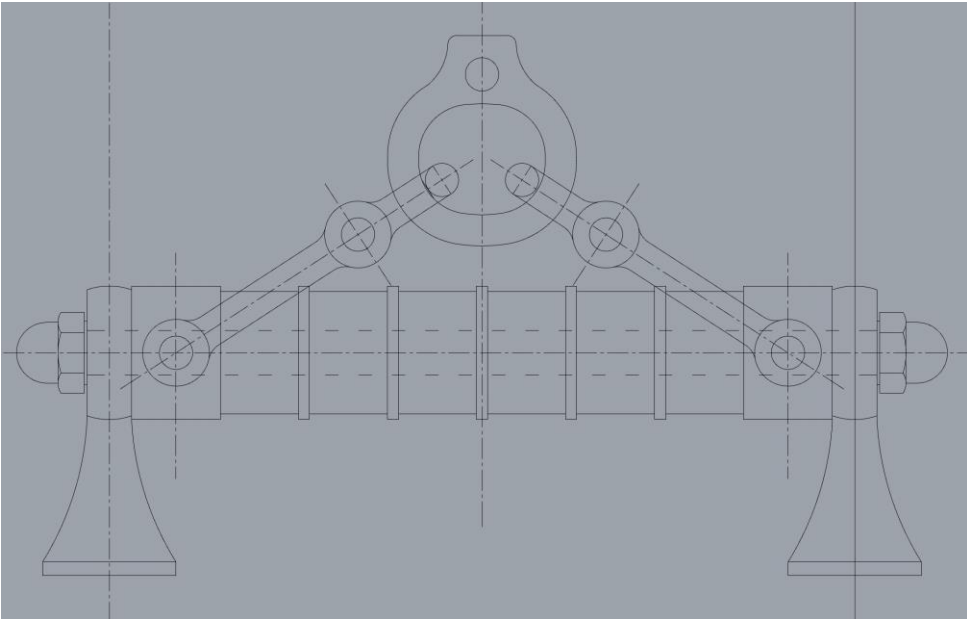
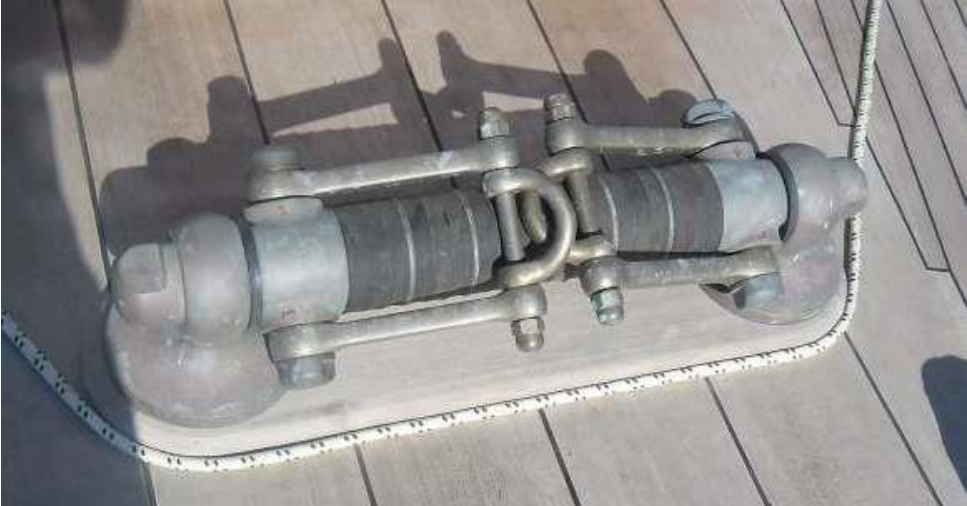
Nail Bench: Nail bench may be fitted near masts and shrouds to tie-off halyards and other running rigging.



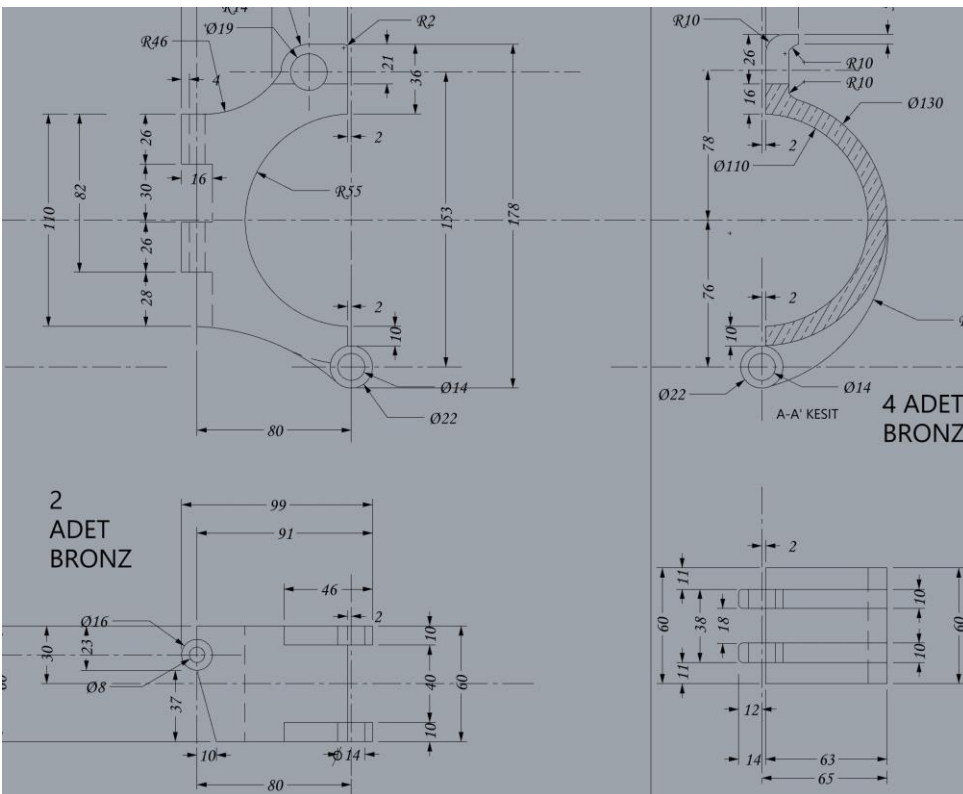
Nail Belt: Nail belts are located at deck level of masts to tie-off free halyards, running rigging and sheets.

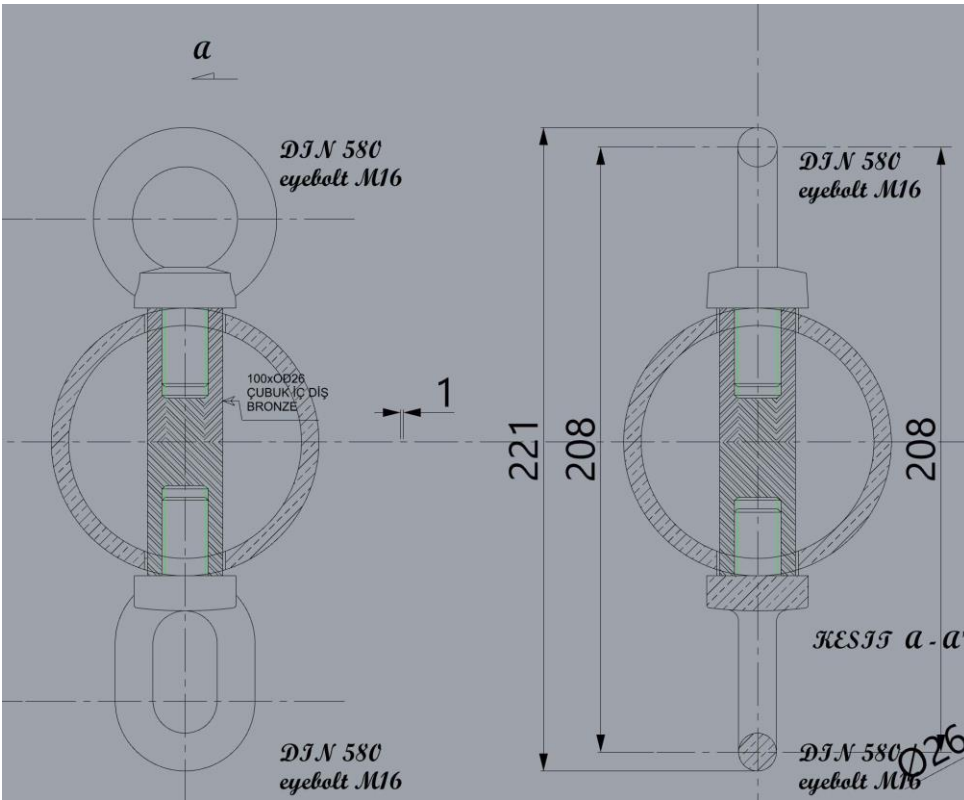


Horse: The horse is fitted to attach the mainsheet block to the deck. During tack operations the flexible elastic rubbers will absorb impact and shock loads.



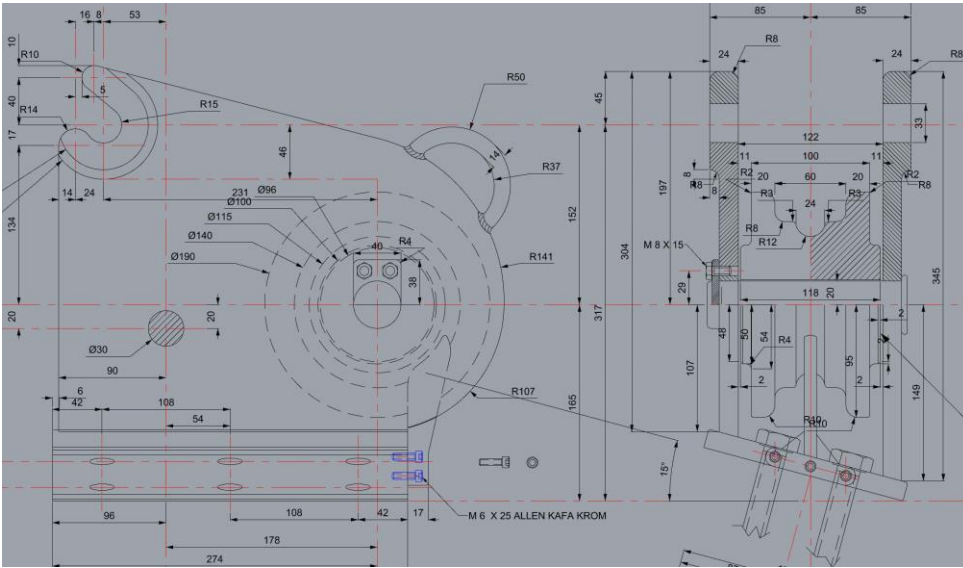
Davit holder clamp:





Chain stopper with devil's clews:

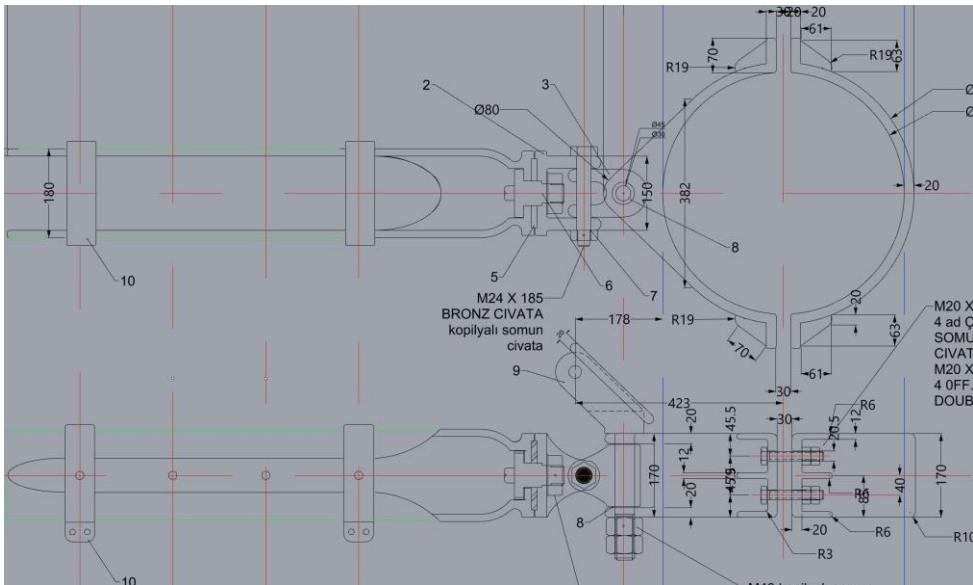




Rigging Equipment:

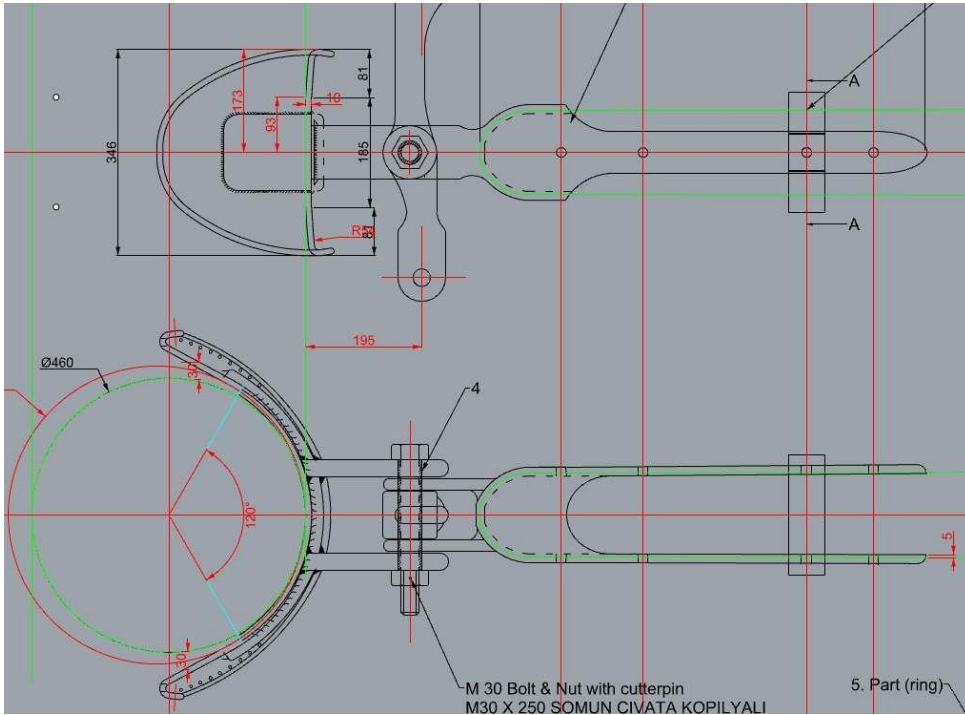
Swivel goose neck and gaff joint:



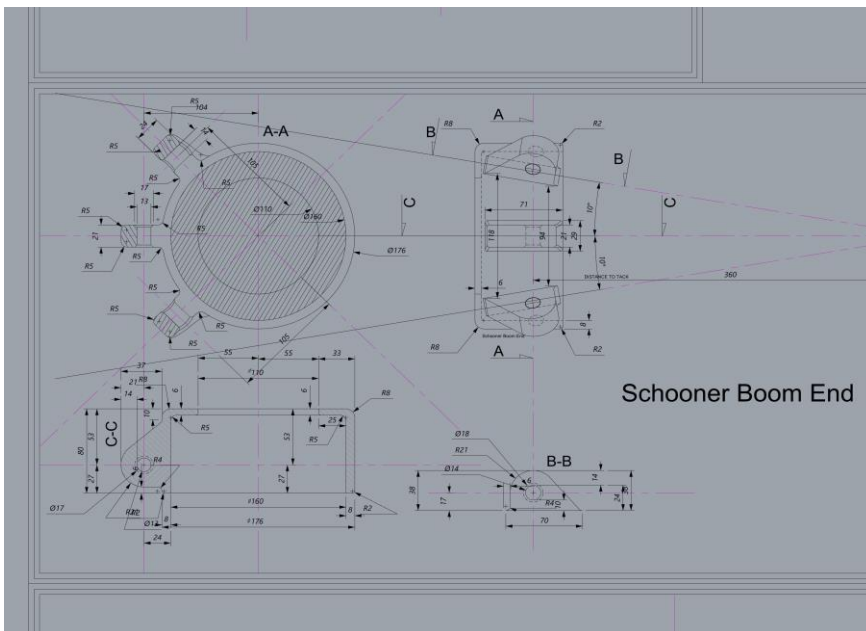


Gaff joint:



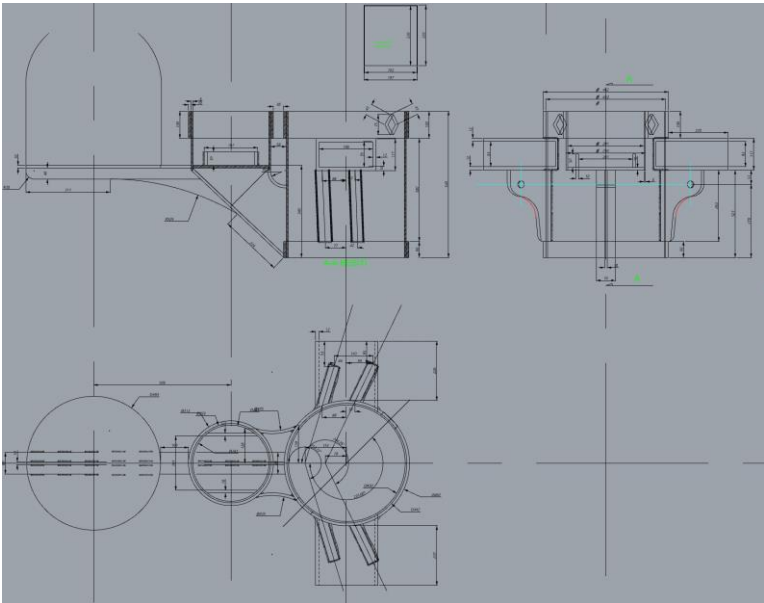


Boom End Fittings:

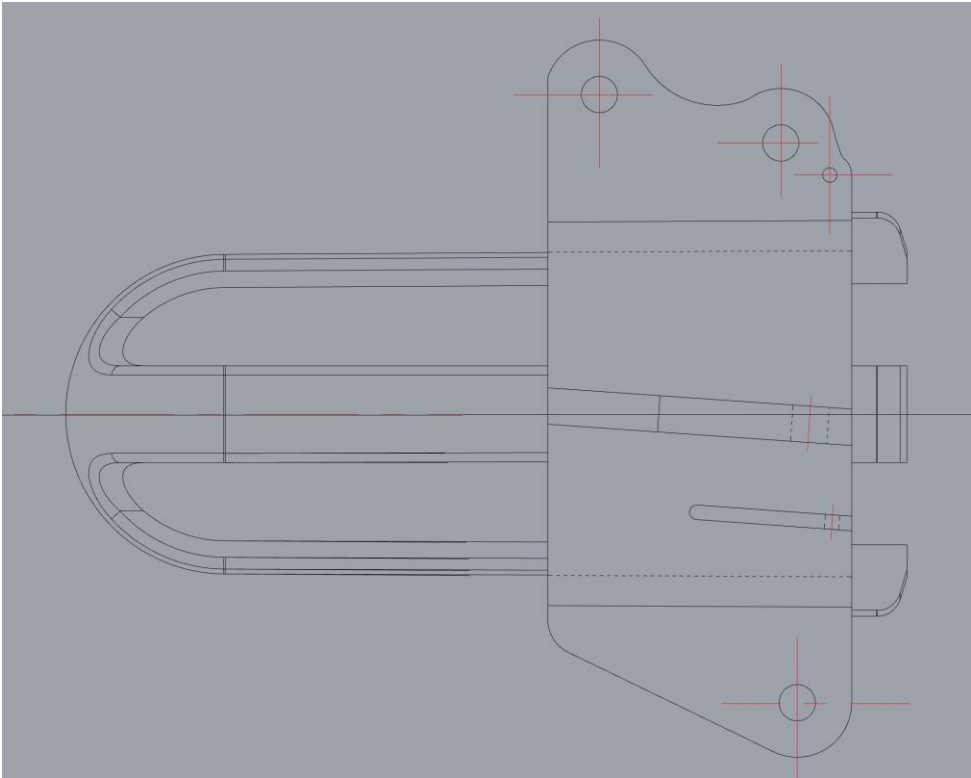




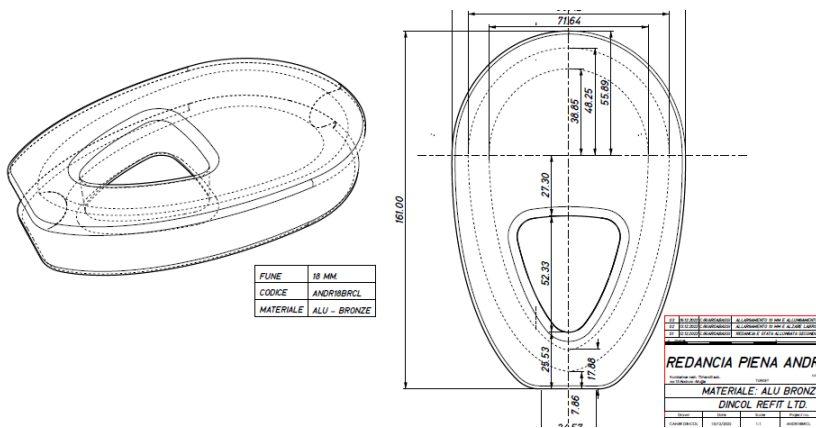
Lower and upper mast joining pieces:



Bowsprit end piece:



Bronze thimble:



Biçimlendirilmiş: Yazı tipi: 16 nk, Kalın

Signal Cannon:



Caner Dincol



Lerotec Srl -Studio Alaimo
Via A.Appiani 21 20900 Monza MB Italy

Caner Dincol +39 379 2137218. +90 532 5028679
www.lerotec.com. info@lerotec.com

Codice univoco QULXG4S
P.IVA: 13175790966

Banca/Bank : Intesa S.Paolo
Titolare/Bank holder: Lerotec Srl
Iban : IT43A0306909450100000014836
Swift / BIC. : BCTTMM
